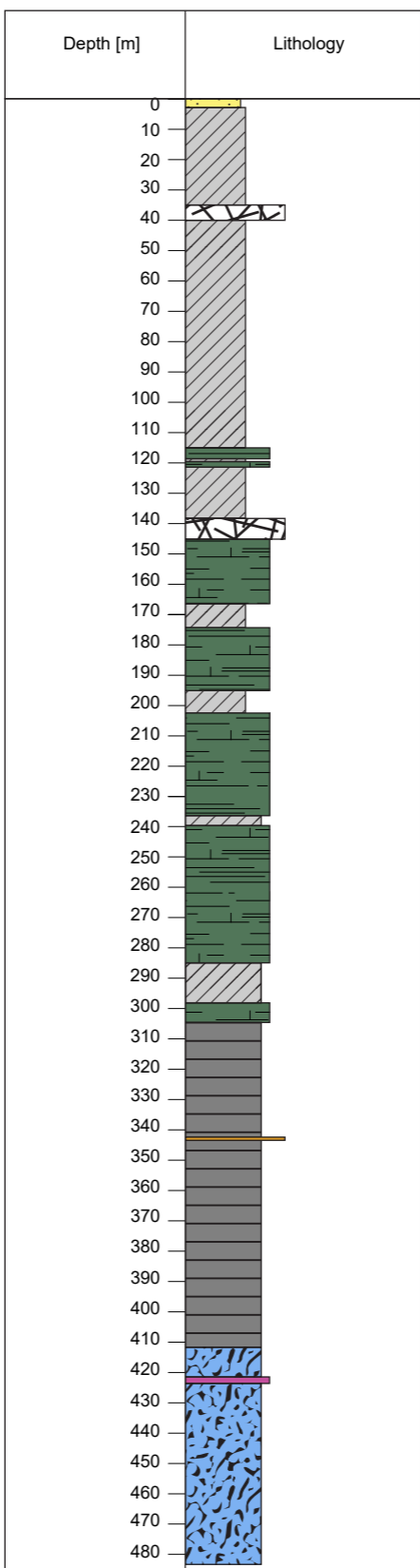










# S2 Tisová borehole



## Legend

- |  |                                     |   |  |
|--|-------------------------------------|---|--|
|  | Loamy debris                        |  | Quartz                                       |
|  | Chlorite/chlorite-sericite phyllite |  | Sericite-chlorite/chlorite-sericite phyllite |
|  | Diortite porphyrite                 |  | Highly silicified phyllite                   |
|  | Metabasite                          |  | Chlorite-sericite phyllite                   |