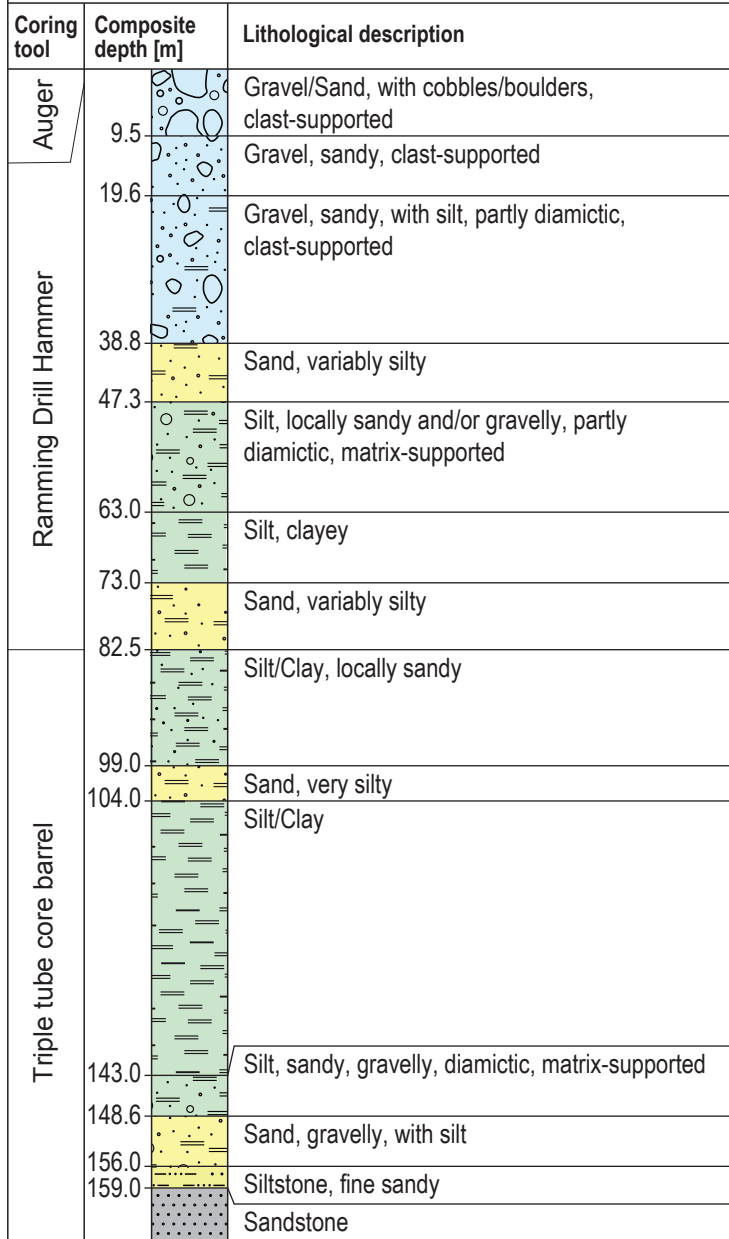


ICDP DOVE 5068_1_C (TANN-C)

N 47° 59' 58.38", E 9° 44' 56.45" / 588.09 m a.s.l.



Dominant lithology (based on core-catchers only)



ICDP DOVE 5068_2_A (BASA-A)

N 47° 38' 53.14", E 8° 45' 11.72" / 445.1 m a.s.l.

